

TRJ2000~6000 Series

Rotary Joint



- Compact size and light weight.
- Very low rotation resistivity.
- Non lubrication type.

How to order

TRJ **4** **000** **A** — **04** **R**

1 2 3 4 5

1 Rotary joint

2 Body size

- 2 : 1/4
- 3 : 3/8
- 4 : 1/2
- 5 : 3/4
- 6 : 1

3 Fluid

- A : Air
- W : Water

4 Port size

Symbol	Size	Body size					
		2	3	4	5	6	
01	1/8	●					
02	1/4	●					
03	3/8		●				
04	1/2			●			
06	3/4				●		
10	1					●	

5 Mounting thread direction

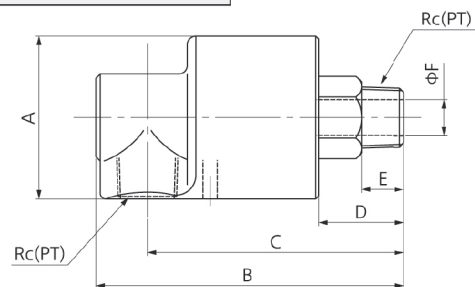
- R : Right thread direction
- L : Left thread direction

Standard specifications

Fluid	Air, water	
Max. operating temperature	100°C	
Max. operating pressure	10bar (1MPa)	
Max. rotation	Air	800rpm
	Water	500rpm

Dimension(mm)

TRJ 2000~6000



Type	Port size(PT)	A	B	C	D	E	F
TRJ2000-01	1/8	45	88.5	73	24	11	7
TRJ2000-02	1/4	45	88.5	73	24	11	7
TRJ3000-03	3/8	45	93	79	28	12	9
TRJ4000-04	1/2	57	108	91	30.5	15	12.5
TRJ5000-06	3/4	63	121	101	35	16	17
TRJ6000-10	1	74	138.5	115.5	42	18	21.5